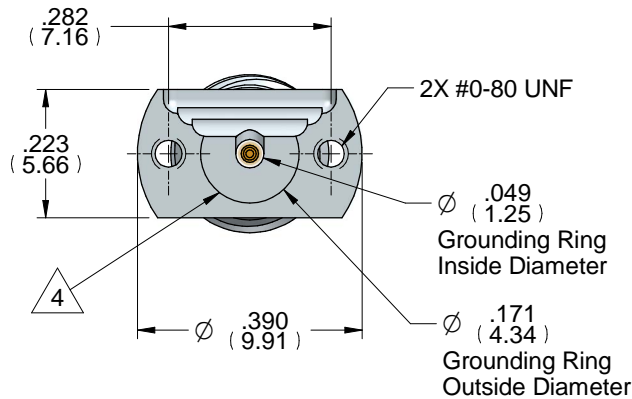
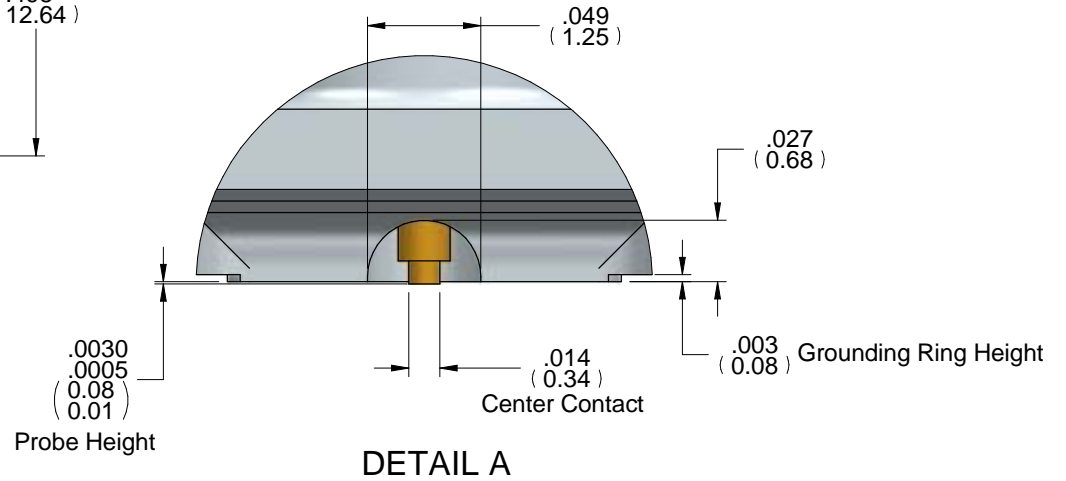
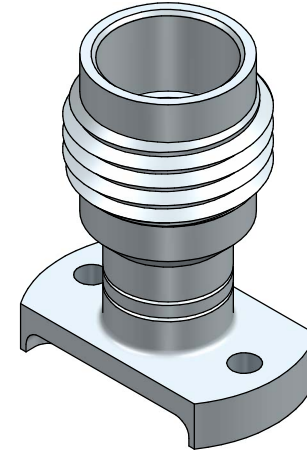
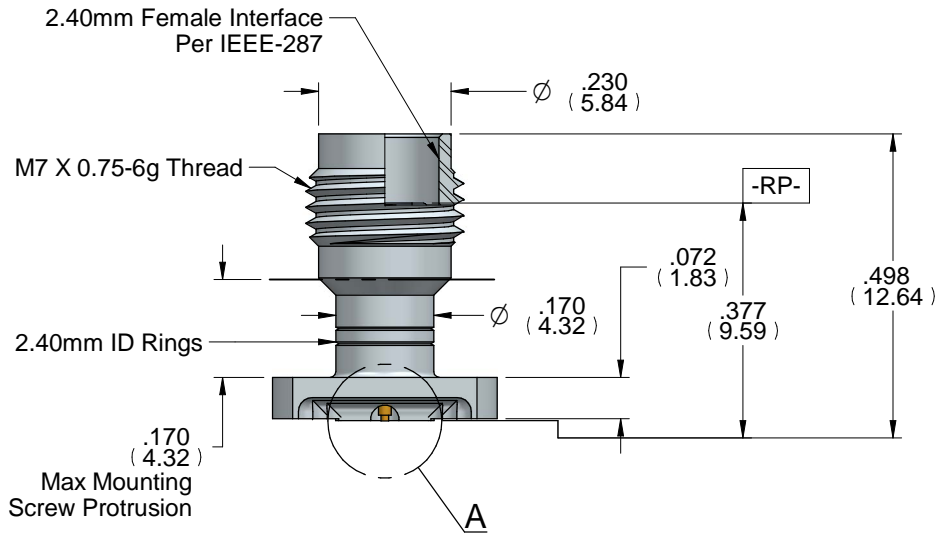




TLF50-001

2.40mm Top Launch, 50GHz



Notes (Unless Otherwise Specified):

1. All dimensions are in inches.
2. All angles are in degrees.
3. Dimensions in [xxx] are in millimeters.

4. Metal Grounding Ring

MATERIAL TABLE

ITEM	MATERIAL
Housing	303 Stainless Steel, Steel Cres Alloy UNS S30300 per ASTM A582 Passivated Per AMS2700 Method 1 Type 2
Sleeve	304 Stainless Steel, UNS S30400 per ASTM A167 Passivated Per AMS2700 Method 1 Type 2
Dielectric	Neoflon per ASTM D1430
Center Conductor	BeCu Alloy UNS C17300 Cond. TH04 per ASTM B196, Gold Plated per MIL-DTL-45204

APPROVAL	DATE	DWG NO	REV
BR	04/23/23	TLF50-001	A
FILE NAME: TLF50-001 Outline.dwt			SHEET 1 OF 1