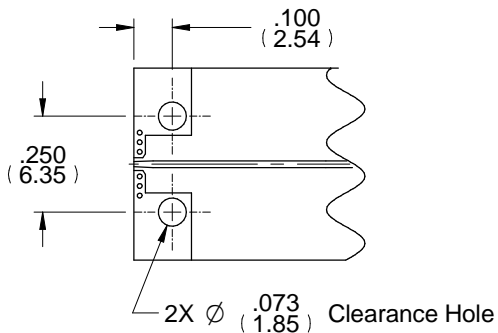
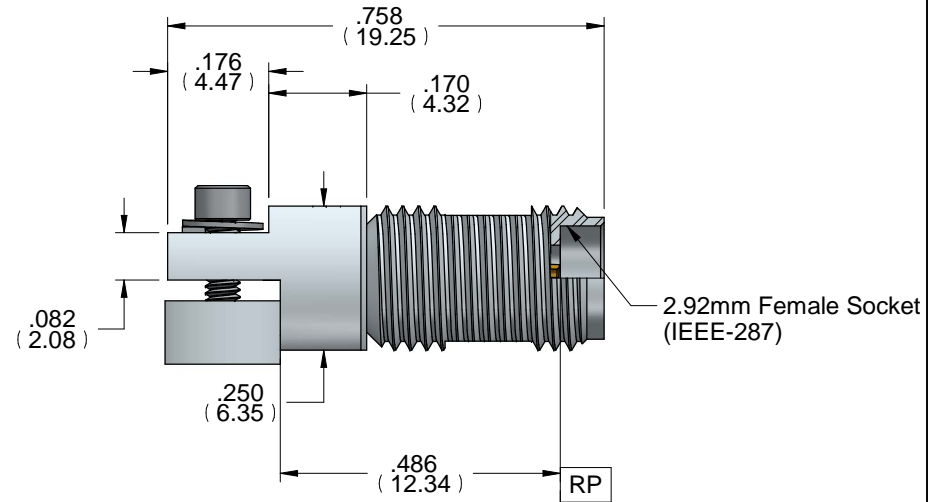
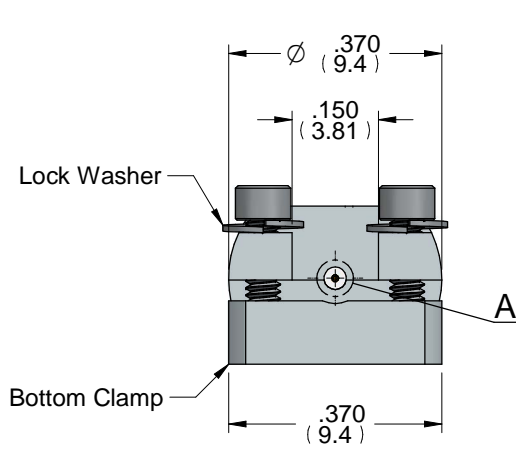


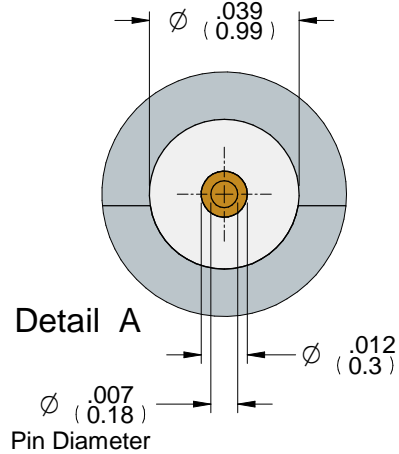


# ELFXL40-001

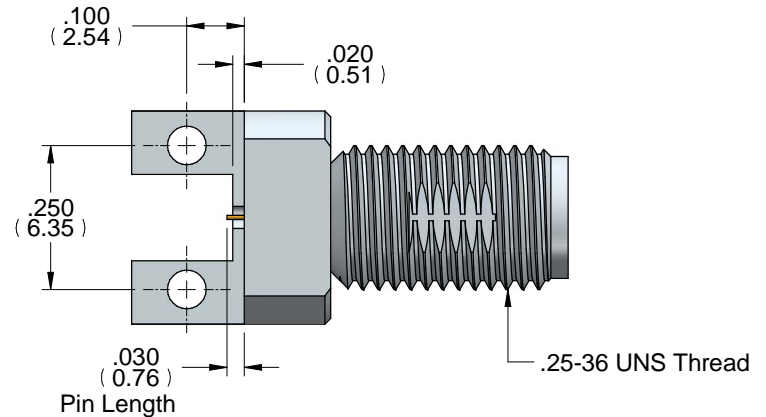
## 12mil Extended Length 2.92mm Edge Launch .375 Profile



Board Mounting Detail

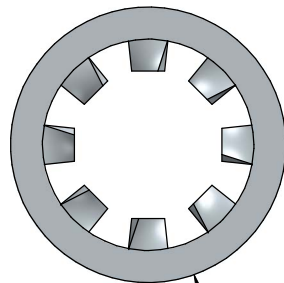
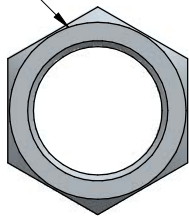


Detail A



Mounting Screws and Bottom Clamp  
Not Shown for Clarity

.25-36 UNS Jam Nut



.25 Lock Washer

Notes (Unless Otherwise Specified):

1. All dimensions are in inches.
2. All angles are in degrees.
3. Dimensions in [xxx] are in millimeters.

### MATERIAL TABLE

ITEM	MATERIAL
Housing	303 Stainless Steel, Steel Cres Alloy UNS S30300 per ASTM A582 Passivated Per AMS2700 Method 1 Type 2
Dielectric 1	Neoflon per ASTM D1430
Dielectric 2	PTFE Per ASTM D1710 Type 1, Grade 1, Class B
Center Conductor	BeCu Alloy UNS C17300 Cond. TH04 per ASTM B196, Gold Plated per MIL-DTL-45204

APPROVAL	DATE	DWG NO	REV
BR	01/11/21	ELFXL40-001	B
FILE NAME: ELFXL40-001 12mil Extended Length 2.92mm Edge Launch .375 Profile Outline.dwg			SHEET 1 OF 1