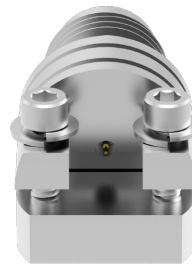


Common Interface
ELF50



Narrow Profile
ELF50-001



Standard Profile
ELF50-002

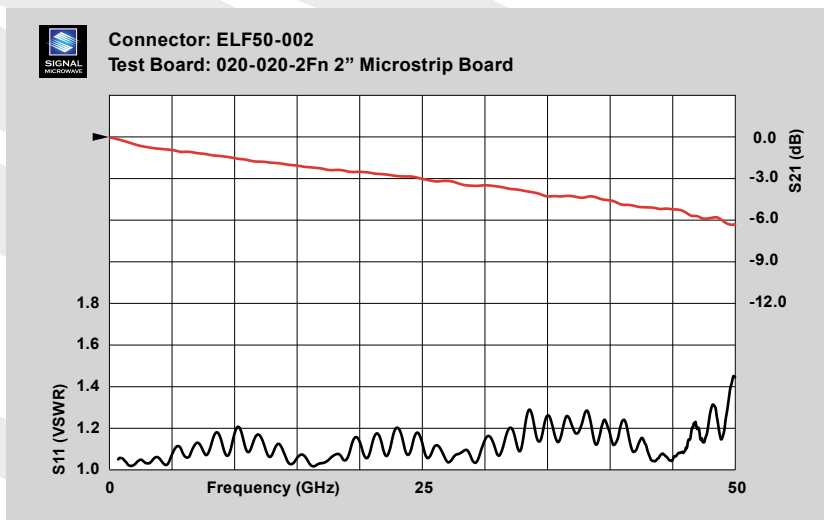
Signal Microwave ELF50

2.40 mm Edge Launch Connectors for the Digital Industry

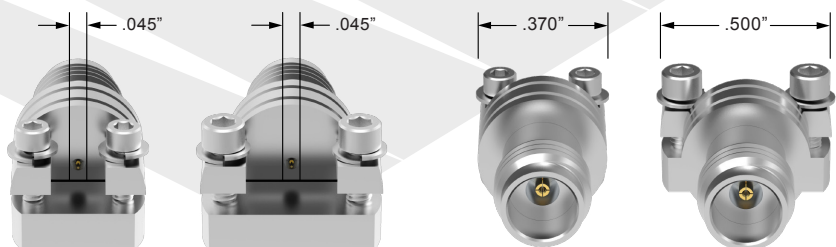
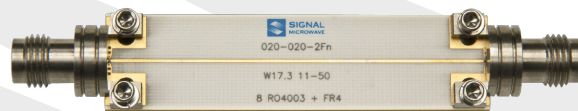
ELF50-001 (Narrow Profile) to more tightly couple differential lines on curved edges

ELF50-002 (Standard Profile) to use instead of current high priced offerings. Both Models have the same launch geometry and internal construction.

- 2.40 mm Interface
- Top Ground Only
- 50 GHz Bandwidth
- Board Design Support Available
- Edge Launch
- Test Boards Available
- No Soldering Required



2" microstrip test board with typical data through 50 GHz



Signal Microwave, LLC
Chandler, Arizona
info@signalmicrowave.com
www.signalmicrowave.com
(480) 322-4992